



CATALOG

PENNY MILLER
PRESIDENT & CO-OWNER

PO Box 168
3221 E Mill Road, Altamont, IL 62411
penny@bmcwrentals.com
bmcwrentals.com
618-322-3436



PENNY MILLER
PRESIDENT & CO-OWNER

PO Box 168
3221 E Mill Road, Altamont, IL 62411
penny@bmcwrentals.com
bmcwrentals.com
618-322-3436

EQUIPMENT RENTALS

SKID STEERS

Takeuchi TL10V2 HF with Weight Kit	3-7
*includes Forks and Bucket	
Takeuchi TL12V2 HF	8-12
*includes Forks and Bucket	

MINI EXCAVATORS

Yanmar ViO35-6A.....	13-14
Yanmar ViO55-6A.....	15-16
Takeuchi TB240.....	17-21
Takeuchi TB260.....	22-26
Your choice: 12", 18", 24" Standard on all excavators or 30" & 36" Smooth	

BOOM LIFT

JLG 450 AJ Articulating Boom Lift w/ Skypower.....	27-29
--	-------

TELEHANDLER

JLG 1055 Telehandler	30-31
JLG 1255 Telehandler	32-33

ACCESSORIES

Erskine PMI Brush Mower 72" Bi-Directional/12ms Couplers	34
Brush Grapple	35-36



"We specialize in high-quality construction equipment. Our equipment has all the amenities to help you do the job with efficiency and comfort. We're proud to be a women-owned company and to provide exceptional, personal service."

IF EQUIPMENT IS NOT LISTED PLEASE CALL-WE CAN HELP!

COMPACT TRACK LOADER

Takeuchi

From World First to World Leader

TL10V2



Takeuchi

From World First to World Leader

Takeuchi Mfg. U.S., Ltd.

40th Anniversary
1979 - 2019

Product Features & Specifications

ENGINE

- EPA Final Tier 4 Emission Compliant
- Turbocharged
- High Pressure Common Rail Injection System
- DOC+DPF Exhaust After Treatment
- Automatic Fuel Bleed System
- Active Power Control Power Management System
- Working Modes - Standard and ECO
- Dual Element Air Filter
- Dial and Foot Throttle
- High Capacity Radiator and Hydraulic Oil Cooler Mounted Side-by-Side on Swing Out Frame

ELECTRICAL

- 5"7 Multi-Informational Color Display
- Sealed Rocker Switches
- 12 volt System with 60 amp Alternator
- LED Work Lights: Two Front and Two Rear
- Engine Preheat
- Hour Meter
- Back-up Alarm

UNDERCARRIAGE AND FRAME

- Double Planetary Reduction Drives
- Permanently Sealed Track Rollers with Metal Face Seals
- Fully Welded Frame with Integrated Cross Members
- Two-Speed Travel
- 15.7" Rubber Track
- Grease Type Track Adjuster
- Front and Rear Tie-Down Points and Lift Points
- Rear Bumper Integrated into Frame

OPERATOR'S STATION

- Tilt-up Operator's Station
- Deluxe High Back Suspension Seat
- Rear View Camera
- Rear Pivoting Lap Bar with Arm Rest
- ROPS / FOPS Structure
- Retractable 2" Seat Belt
- Pressurized Cab with Roll-up Door, A/C, Heat, Defrost and Front Wiper, and AM / FM / MP3 Radio with NOAA Weatherband (optional)
- Polycarbonate Door and Level 2 Guard (High Flow Only)

HYDRAULIC & WORKING EQUIPMENT

- Vertical Lift Design
- Pilot Hydraulic Controls
- Boom Float with Detent
- Cushioned Boom Cylinders
- Hydraulic Self Leveling
- Proportional Auxiliary Hydraulic Controls with Detent
- Pressure Relieving Flat Faced Coupler Body
- 14-Pin Connector with Push Button Control
- High Capacity Steel Hydraulic Tank
- Mechanical Quick Coupler
- Hydraulic Quick Coupler
 - Cab - Standard Equipment
 - Canopy - optional
- High Flow Auxiliary Hydraulics 32.8 gpm
- Ride Control
- Pattern Change Valve (ISO or H)

TAKEUCHI FLEET MANAGEMENT

- 2 Year Standard Service
- Minimize Downtime
- Remote Diagnostics
- Utilization Tracking
- Proactive Maintenance
- Control Costs



Convenient Service and Maintenance Access

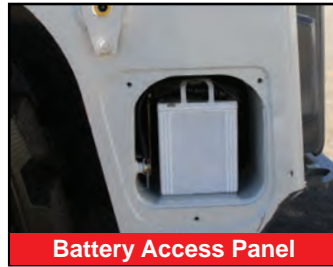


Vertical Lift Path for Balance and Stability

TOUGH, RUGGED, EFFICIENT



Pilot Operated Controls



Battery Access Panel



Lower Cross Member & Step



Oversized Lift Cylinders

The TL10V2 vertical lift track delivers excellent functionality, performance, comfort, and serviceability. It features a completely redesigned operator's station with a 5.7" color multi-information display and updated rocker switches that control a wide range of machine functions. Cab models have a smooth, low effort overhead door that improves entry and egress and enables the loader to be operated with the door in the raised or lowered position. An updated undercarriage with a wide block quiet ride track system provides better flotation, improved ride quality, and a reduction in noise and vibration. A powerful 74.3 horsepower engine meets the latest

EPA Tier 4 emissions standards while delivering an outstanding blend of power and torque for impressive performance in the most demanding applications.

Equipped with the Takeuchi Fleet Management (TFM) telematics system critical information such as machine health, condition, diagnostics, and location can be viewed remotely providing valuable real time machine information that will help control costs and keep downtime to a minimum. The Takeuchi Fleet Management system is a real value as the service is free for the first two years of machine ownership.



Spacious operator's platform with easy to reach controls and switches.

OPERATING PERFORMANCE - WITH COUNTER WEIGHT OPTION

Operating Weight - Canopy	9,950 lb	(4,515 kg)
Cab	10,270 lb	(4,660 kg)
Tipping Load	7,765 lb	(3,522 kg)
Rated Operating Capacity, SAE J818*	2,718 lb	(1,233 kg)
Operating Load at 50% of Tipping Load	3,882 lb	(1,761 kg)
Bucket Breakout Force	6,520 lb	(2,960 kg)
Lift Arm Breakout Force	5,400 lb	(2,450 kg)
Traction Force	9,730 lb	(4,410 kg)
Ground Pressure - Canopy	4.9 psi	(34.3 kPa)
Ground Pressure - Cab	5.1 psi	(35.4 kPa)
Travel speed - Low	4.8 mph	(7.7 km/hr)
High	7.0 mph	(11.3 km/hr)

* Operating capacity of compact track loaders is rated according to SAE J818 at no more than 35% of the tipping load

HYDRAULIC SYSTEM

Auxiliary Flow - Primary Circuit	18.8 gpm	(71.2 Lpm)
Auxiliary Flow - High Flow (optional)	32.8 gpm	(124.0 Lpm)
Hydraulic System Pressure	3,481 psi	(24.0 MPa)

ENGINE

Make / Model	Kubota / V3307CR-TE4B	
Engine Displacement	203 cu in	(3.3 L)
Horsepower @ 2,600 rpm	74.3 hp	(55.4 kW)
Maximum Torque @ 1,500 rpm	195 ft-lb	(265.0 Nm)

FLUID CAPACITIES

Engine Lubrication	11.8 qt	(11.2 L)
Cooling System	15.9 qt	(15.0 L)
Fuel Tank Capacity	21.5 gal	(81.0 L)
Fuel Consumption (65% of Full Load)	2.7 gal/hr	(10.3 L/hr)
Hydraulic Reservoir Capacity	9.5 gal	(36.0 L)
Hydraulic System Capacity	17.2 gal	(65.0 L)



LCD Display



Rear View Camera

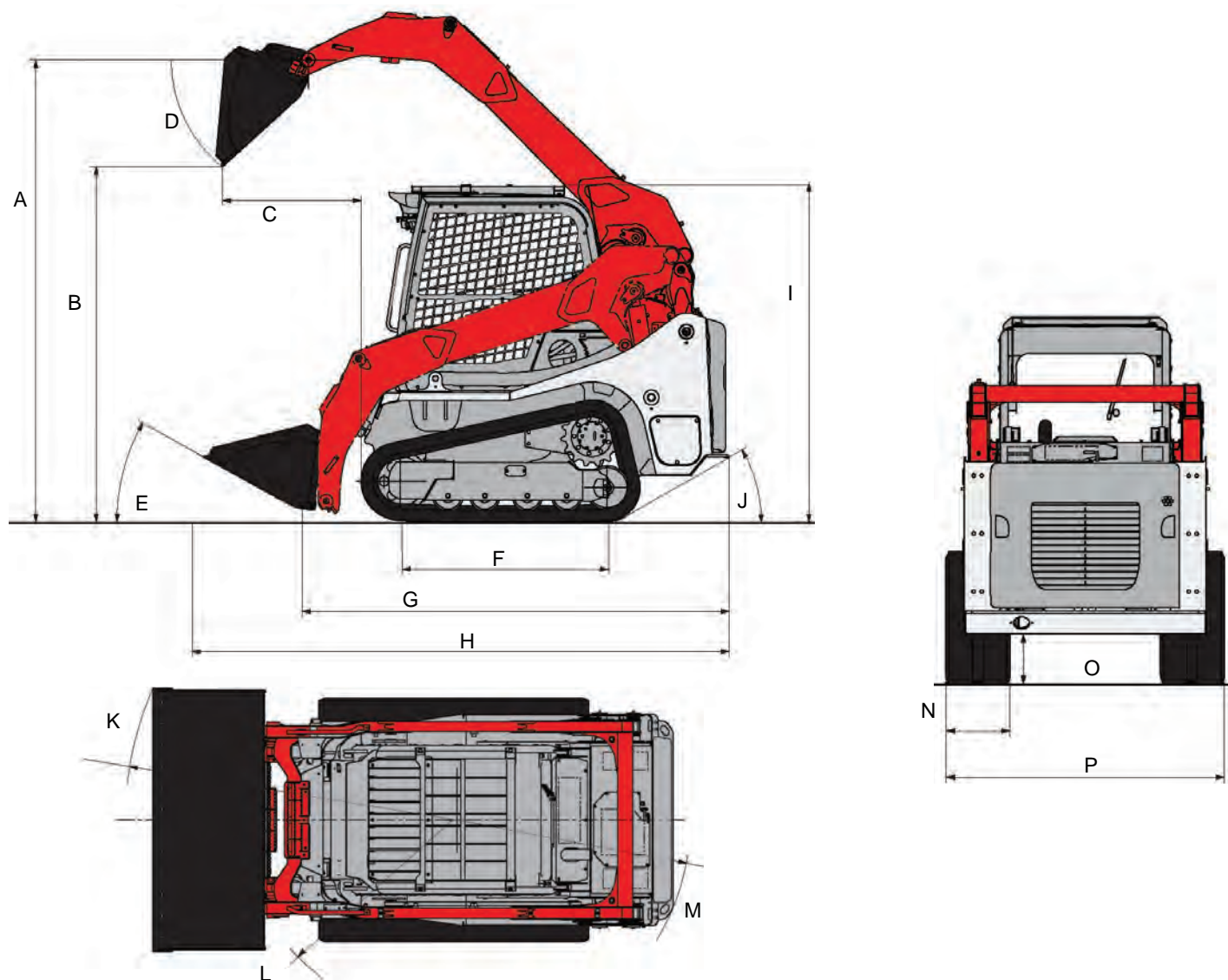


LED Work Lights



Hydraulic Lock

TL10V2 Compact Track Loader



MACHINE DIMENSIONS

A	Maximum Lift Height to Bucket Pin	10 ft 4.8 in	(3,169 mm)
B	Dump Height Fully Raised	7 ft 11.9 in	(2,435 mm)
C	Dump Reach Fully Raised	3 ft 1.4 in	(950 mm)
D	Dump Angle	40°	
E	Rollback Angle	30°	
F	Track Ground Contact Length	4 ft 7.9 in	(1,419 mm)
G	Machine Length	9 ft 7.2 in	(2,925 mm)
H	Transport Length	12 ft 1.0 in	(3,680 mm)
I	Transport Height	7 ft 5.4 in	(2,270 mm)
J	Departure Angle	30°	
K	Clearance Circle with Bucket	7 ft 8.5 in	(2,350 mm)
L	Clearance Circle without Bucket	5 ft 0.0 in	(1,535 mm)
M	Clearance Circle Rear	5 ft 5.2 in	(1,655 mm)
N	Track Width	15.7 in	(400 mm)
O	Ground Clearance	12.6 in	(320 mm)
P	Overall Width without Bucket	5 ft 8.5 in	(1,740 mm)

COMPACT TRACK LOADER

takeuchi

From World First to World Leader

TL12V-2



Operating Weight: 5,835 kg

Product Features & Specifications

ENGINE

- EU Stage V / EPA Tier 4 Emission Compliant
- Turbocharged and Intercooled
- DOC+DPF+SCR Exhaust After Treatment
- Active Power Control Power Management System
- ECO Modes
- Foot Throttle Control
- Automatic Fuel Bleed System
- Extended Life Coolant
- High Capacity Radiator, Hydraulic Oil Cooler and Intercooler Mounted Side-by-Side on Swing Out Frame
- Double Element, Air Cleaner

ELECTRICAL

- 12 volt System with 80 amp Alternator
- Heavy Duty, Quick Access Battery
- LED Work Lights, Front and Rear
- 5.7" Color Multi-Informational Display with Rear View Camera
- Sealed Rocker Switches
- Back-up Alarm
- Horn
- TFM (Takeuchi Fleet Management; GPS)*

UNDERCARRIAGE AND FRAME

- 450 mm Quiet Track Design with Flotation Tread
- Long Track Frame
- Fully Welded Frame with Integrated Cross Members
- Rear Bumper Integrated into Frame
- Front and Rear Tie-Down and Lift Points
- Double Reduction Planetary Track Drives
- 2-Speed Travel

OPERATOR'S STATION

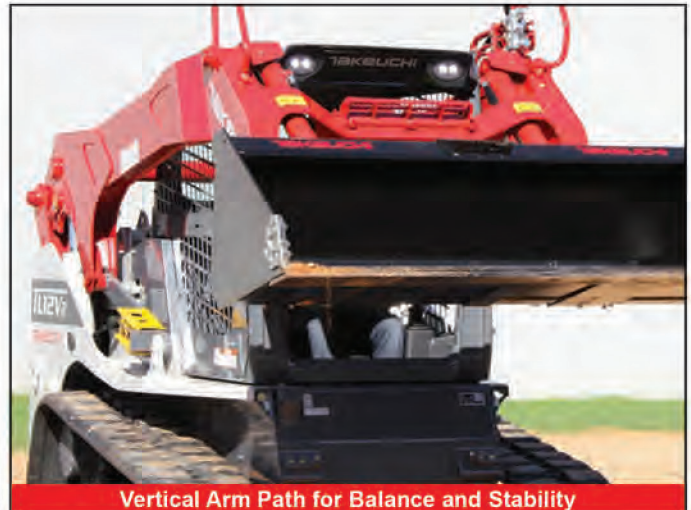
- Tilt-up Operator's Station
- Deluxe High Back Adjustable Suspension Seat
- Rear Pivoting Seat Bar with Integrated Arm Rests
- Retractable 2" Seat Belt
- ROPS/FOPS Level I
- FOPS Level II Roof Guard Kit (optional)
- Polycarbonate Front Door (Cab optional)*
- Pressurized Cab with Roll-up Door, Air Conditioning, Heat, Defrost, Front Wiper and AM/FM/MP3 Radio (Cab Only)
- Rear Wiper (Cab Standard Equipment in Europe Only)

HYDRAULIC & WORKING EQUIPMENT

- High Lift Vertical Arm Design
- Lower Front Cross Member
- Cushioned Arm Cylinders
- Arm Float with Detent
- Hydraulic Joysticks Controls
- Proportional Auxiliary Controls with Detent
- Pressure Relieving Flat Faced Coupler Body
- Hydraulic Self Leveling (ON/OFF)
- Mechanical Quick Hitch
- 14-Pin Connector with Push Button Control (optional)
- Hydraulic Quick Hitch (optional)
- High Flow Auxiliary Hydraulics 153.0 L/min
- Secondary Auxiliary Circuit 88.0 L/min (optional)
- Ride Control
- Control Pattern Change Valve (ISO or H)
- Manual Parking Brake (optional)



Convenient Service and Maintenance Access



Vertical Arm Path for Balance and Stability

*Functions may not be available in all countries, so please consult your Takeuchi dealer for details.

TOUGH, POWERFUL, RELIABLE



Pilot Operated Controls



Battery Access Panel



Lower Cross Member & Step



Oversized Arm Cylinders

Takeuchi's first vertical lift compact track loader, the TL12V-2 demonstrates a continuous commitment to product improvement and innovation. It is the largest and most capable track loader available today and delivers best in class rated operating capacity (ROC), a completely redesigned operator's station that features a color multi-information display with rear view camera, convenient rocker switches to control a wide range of functions, and an updated undercarriage design that enhances operator comfort by reducing vibration and noise levels.

The TL12V-2 features a powerful 81.8 kW engine that meets the very latest in EU Stage V / EPA Tier

4 emissions standards while delivering outstanding power and torque for the very best performance in the most demanding applications.

Performance features include massive loader arms, oversized arm cylinders and pins, rear bumper with integrated tie downs, high capacity cooling module, and LED lights on the front and rear of the machine. The TL12V-2's interior includes an updated overhead door design, redesigned foot throttle, precision pilot controls, backlit rocker switches, convenient cup holders, and a deluxe high back suspension seat for those long hours on the jobsite.



Spacious Operator's Station with Easy to Reach Controls and Switches

OPERATING PERFORMANCE

Operating Weight - Canopy	12,860 lb	(5,835 kg)
Cab	13,190 lb	(5,985 kg)
Tipping Load	11,737 lb	(5,324 kg)
Rated Operating Capacity @ 35%*	4,107 lb	(1,863 kg)
Operating Load @ 50% of Tip Load	5,868 lb	(2,662 kg)
Bucket Breakout Force	7,874 lb	(3,571 kg)
Lift Arm Breakout Force	7,109 lb	(3,225 kg)
Traction Force	14,010 lb	(6,353 kg)
Ground Pressure	4.8 psi	(33.0 kPa)
Travel Speed		
Low	5.0 mph	(8.1 km/hr)
High	7.3 mph	(11.6 km/hr)

*Rated Operating Capacity for compact track loaders is rated according to ISO 14397-1 at no more than 35% of the tipping load.

HYDRAULIC SYSTEM

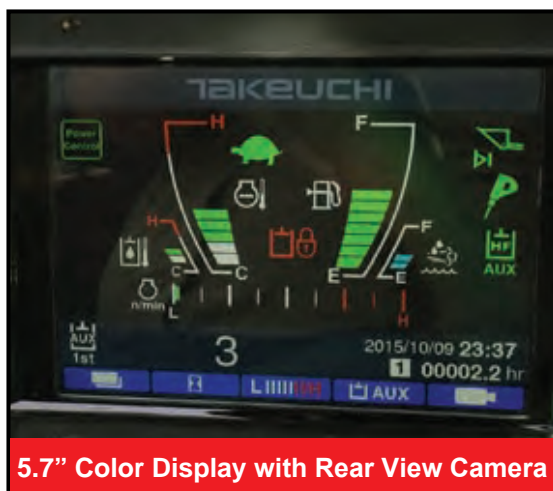
Auxiliary Flow - Primary Circuit	23.2 gpm	(88.0 Lpm)
Auxiliary Flow - High Flow	40.4 gpm	(153.0 Lpm)
Auxiliary Flow - 2nd Circuit (optional)	23.2 gpm	(88.0 Lpm)
Hydraulic System Pressure	3,481 psi	(24.0 MPa)

ENGINE

Type	Kubota / V3800-TIF4B	
Engine Displacement	230 cu in	(3.8 L)
Horsepower @ 2,400 rpm	111.3 hp	(83.0 kW)
Maximum Torque @ 1,500 rpm	284 ft-lb	(385.0 Nm)

FLUID CAPACITIES

Engine Lubrication	13.9 qt	(13.2 L)
Cooling System	19.0 qt	(18.0 L)
DEF Fluid Tank Capacity	4.8 gal	(18.0 L)
Fuel Tank Capacity	31.6 gal	(119.5 L)
Hydraulic Reservoir Capacity	13.2 gal	(50.0 L)
Hydraulic System Capacity	24.8 gal	(94.0 L)



5.7" Color Display with Rear View Camera



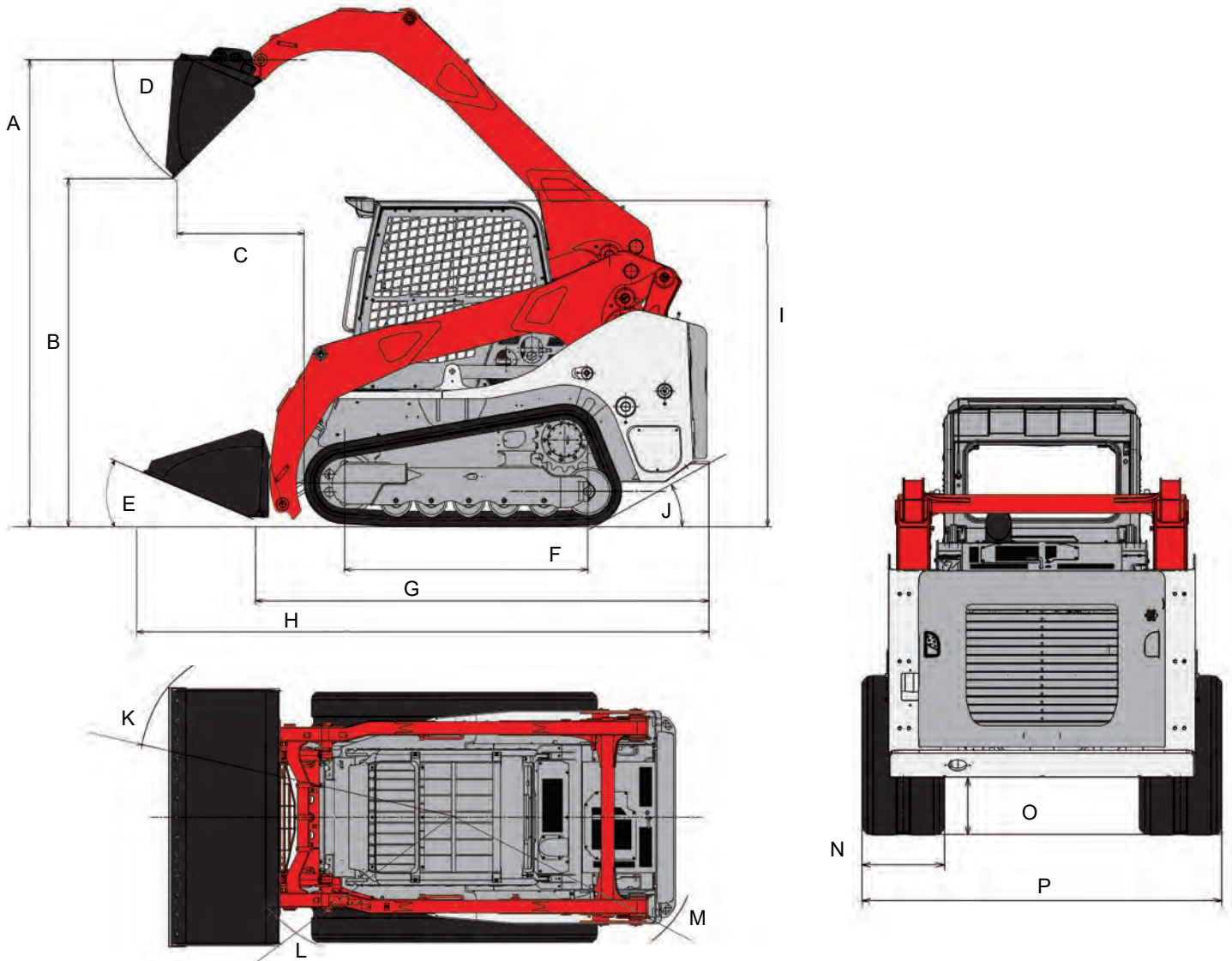
12 volt Accessory Outlet



Roll Up Door



Rocker Switches



MACHINE DIMENSIONS

A	Max. Lift Height to Bucket Pin	10 ft 10 in	3,302 mm
B	Dump Height Fully Raised	8 ft 1.0 in	2,459 mm
C	Dump Reach Fully Raised	3 ft 0.4 in	924 mm
D	Dump Angle	46.8°	
E	Rollback Angle	30°	
F	Track Base	5 ft 7.6 in	1,717 mm
G	Machine Length	10 ft 6.2 in	3,205 mm
H	Transport Length	13 ft 3.3 in	4,045 mm
I	Transport Height	7 ft 7.7 in	2,330 mm
J	Departure Angle	30°	
K	Clearance Circle with Bucket	8 ft 2.6 in	2,505 mm
L	Clearance Circle without Bucket	5 ft 3.4 in	1,610 mm
M	Clearance Circle Rear	6 ft 0.8 in	1,848 mm
N	Track Width	17.7 in	450 mm
O	Ground Clearance	12.6 in	320 mm
P	Overall Width without Bucket	6 ft 5.2 in	1,960 mm



QUICK SPECS

Weight	7,905 lbs
Horsepower	24.4 hp
Digging Depth	11'3"

The most advanced excavator we've ever made.

Introducing the most innovative, fuel-efficient excavator we've ever built. The advanced technology zero tail swing ViO35-6A features an electronically controlled Tier 4 engine that meets emissions regulations without the need for a diesel particulate filter. It also comes standard with ECO and Auto-Deceleration modes for even more operational efficiency, which means the new ViO35-6A can now deliver up to 20% less fuel consumption than previous models. The Yanmar ViO35-6A is the most productive digging, lifting, do-anything excavator you can buy.

INNOVATIVE FEATURES



Advanced Operation Control System

The new digital Smart Assist control system allows you to monitor up to three months of operational history. Because this state-of-the-art system centralizes control of machine operation information and maintenance support information, it's never been easier to maintain a timely, efficient service process.



Quick Coupler System

The standard hydraulic Quick Coupler makes changing buckets fast and easy. With the exception of fitting and removing the safety lock pin, the entire operation is performed electronically while you're seated in the comfort of the cab. Less hassle, less downtime, more productivity!



Easier To Service Than Your Car

The innovative design puts virtually every major component – engine, hydraulic system, starter, generator, battery – right at your fingertips. Because routine filter and grease fitting checks are easier and quicker, you can perform them more often, extending the life of and improving the durability of your machine.

ViO35-6A

STANDARD ENCLOSED CAB WITH HEAT & A/C

ECO & AUTO-DECELERATION MODE STANDARD

JOYSTICK PILOT CONTROLS WITH CONTROL PATTERN CHANGE STANDARD

AUXILIARY HYDRAULICS W/ PROPORTIONAL CONTROL STANDARD

2-SPEED DRIVE CONTROL STANDARD

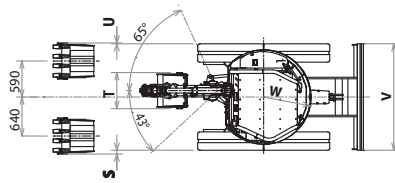
POWERFUL, EFFICIENT ELECTRONICALLY CONTROLLED 24.4 HP TIER 4 DIESEL ENGINE

OPTIONAL SMARTASSIST REMOTE AND GPS SYSTEM

RUBBER TRACKS STANDARD; STEEL TRACKS OPTIONAL

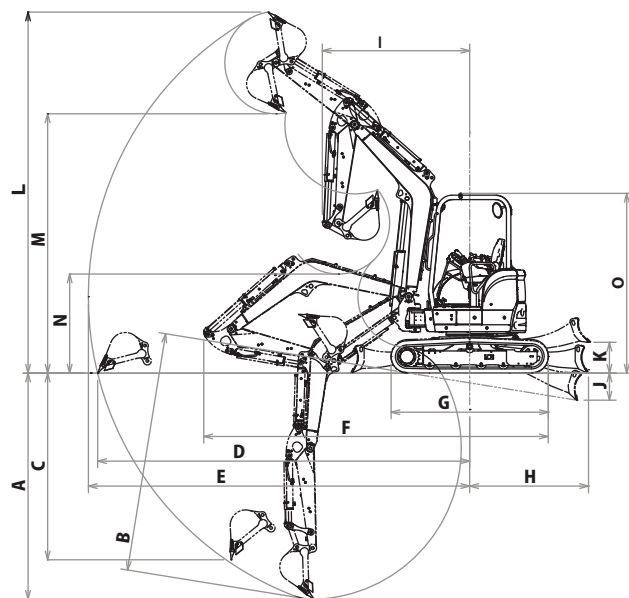
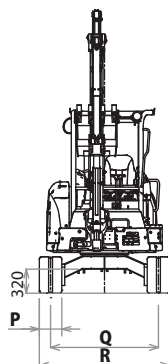


ViO35-6A



Dimensions - ViO35-6A - Rubber Track

A 10 ft. 8 in. (3,250 mm)	L 16 ft. 9 in. (5,110 mm)
B 11 ft. 3 in. (3,440 mm)	M 11 ft. 2 in. (3,410 mm)
C 7 ft. 11 in. (2,410 mm)	N 4 ft. 1 in. (1,240 mm)
D 17 ft. 3 in. (5,270 mm)	O 8 ft. 1 in. (2,470 mm)
E 17 ft. 8 in. (5,390 mm)	P 1 ft. (300 mm)
F 15 ft. 8 in. (4,770 mm)	Q 4 ft. 9 in. (1,440 mm)
G 7 ft. 1 in. (2,160 mm)	R 5 ft. 9 in. (1,740 mm)
H 5 ft. 4 in. (1,630 mm)	S 2.6 in. (65 mm)
I 7 ft. 1 in. (2,170 mm)	T 1 ft. 11 in. (590 mm)
J 1 ft. 3 in. (370 mm)	U 0.6 in. (15 mm)
K 1 ft. 5 in. (425 mm)	V 5 ft. 9 in. (1,740 mm)
	W 2 ft. 7 in. (775 mm)



Specifications

Model		ViO35-6A	
Type		Canopy	Cabin
Operating Weight	Rubber track	lbs (kg)	7905 (3585)
	Steel track	lbs (kg)	8125 (368)
Engine	Type	Water-cooled 4-cycle diesel	
	Model	3TNV88F-ESBV	
	Rated Output	HP (kW)/rpm	
Performance	Max Digging Force, Bucket / Arm	lbs (kN)	w/ QC - 5643 (25.1); w/o QC - 7216 (32.1)
	Traveling Speed, High / Low	MPH (km / h)	2.7 (4.5) / 1.6 (2.7)
	Swing Speed	RPM	9.5
	Boom Swing Angle, (L / R)	degrees	43 / 65
	Ground Contact Pressure (Rubber Track)	PSI (kPa)	4.80 (33.1) 4.97 (34.3)
Hydraulic System	Pump Capacity	GPM (L / min)	9.8 (37.0)x2 <Variable displacement pump> 6.9 (26.2)x1, 2.9 (10.8)x1 <Gear pump>
	Main Relief Set Pressure	PSI (MPa)	3205 (22.1)x2, 3133 (21.6)x1
Blade Dimensions	Width	ft-in (mm)	5' 8" (1740)
	Stroke, Raise / Lower from G.L.	ft-in (mm)	1' 5" (425) / 1' 3" (370)
Fuel tank capacity		Gals (L)	10.8 (41)

Standard Equipment

Hydraulic Quick Coupler*
Backfill Dozer Blade
Boom Swing Function
Rubber Track / Steel Track
Auxiliary Valve and Plumbing
Back Mirror
2-way Control Pattern Change
ROPS / OPG Canopy, Cabin
Windshield Washer
Joystick Pilot Controls
Arm Rests (Adjustable)
Suspension and Reclining Seat
Seat Belt
Proportional Auxiliary
Hydraulics Control
Travel Automatic
Dual Speed Switch
Auto Deceleration Switch
Eco Mode Switch
Engine Stop Switch
Traveling Alarm
Floor Mats

*Also available without Quick Coupler.

Please note that the standard equipment may vary from this list. Consult your Yanmar dealer for confirmation.

Hydraulic PTO

Model	ViO35-6A			
Specification	Output	PSI (MPa)	GPM (L / min)	
			2200RPM	1100RPM
Combined Flow, Double Actions		3205 (22.1)	16.7 (63.2)	8.35 (31.6)

Lifting Capacity

LIFT POINT HEIGHT h: in (mm)	r: REACH in (mm)											
	RATED LIFT CAPACITY OVER END BLADE DOWN				RATED LIFT CAPACITY OVER END BLADE UP				RATED LIFT CAPACITY OVER SIDE BLADE UP			
	MAX	137.8(3500)	118.1(3000)	98.5(2500)	MAX	137.8(3500)	118.1(3000)	98.5(2500)	MAX	137.8(3500)	118.1(3000)	98.5(2500)
118.1 (3000)	*1719(780)	*1631(740)	*1609(730)		1058(480)	1322(600)	*1565(710)		992(450)	1278(580)	*1565(710)	
78.7 (2000)	*1763(800)	*1918(870)	*2138(970)	*2491(1130)	903(410)	1278(580)	1653(750)	*2447(1110)	815(370)	1256(570)	1543(700)	*2447(1110)
39.4 (1000)	*1807(820)	*2336(1060)	*2888(1310)	*3813(1730)	793(360)	1190(540)	1521(690)	1984(900)	749(340)	1124(510)	1410(640)	1807(820)
Ground (0)	*1873(850)	*2601(1180)	*3218(1460)	*4012(1820)	815(370)	1124(510)	1410(640)	1873(850)	793(360)	1058(480)	1322(600)	1719(780)
-39.4 (-1000)	*1940(880)	*2403(1090)	*2954(1340)	*3703(1680)	925(420)	1080(490)	1388(630)	1851(840)	881(400)	1014(460)	1322(600)	1675(760)
-59.1 (-1500)	*1918(870)	*2050(930)	*2579(1170)	*3130(1420)	1124(510)	1080(490)	1410(640)	1851(840)	1058(480)	1058(480)	1344(610)	1675(760)
-78.7 (-2000)	*1851(840)				1477(670)				1410(640)			

o : h m i m u m l o d s m r k d i h n s r r i s k (*) r l i m i d b h r o s h d r u l i l i n g i r h r h i s s i l d (i n g o d) i .

QUICK SPECS

Weight	12,247 lbs
Horsepower	47.6 HP
Max Dig Depth	13'6"

More power at your command with low cost of ownership.



ViO55-6A

POWERFUL, EFFICIENT
47.6 HP TIER 4 FINAL
YANMAR DIESEL ENGINE

VIO PROGRESSIVE
3-PUMP HYDRAULIC
SYSTEM (VIPPS)

EASY-TO-OPERATE
JOYSTICK CONTROLS
WITH ARMRESTS
REDUCE OPERATOR
FATIGUE

SPRING STEEL
CYLINDER ROD GUARDS
AND HOSE PROTECTION

4-PILLAR ROPS/FOPS
CANOPY FOR SAFETY

INTEGRATED BOOM
LIGHT PROTECTS
FROM DAMAGE

EASY MAINTENANCE
ACCESS TO EVERY
MAJOR COMPONENT

ANGLED CRAWLER FRAME
REDUCES FOREIGN
MATTER BUILD-UP

OPTIONAL PTO2
CIRCUIT AVAILABLE

OPTIONAL ENCLOSED
CAB WITH HEAT & A/C

YANMAR's ViO55-6A, our 5.5-ton class mini excavator, is powered by a 47.6 HP turbocharged Tier 4 Final YANMAR engine. Along with true zero tail swing, it also provides operator comfort for the long hours at job sites. The ViO55-6A is one of YANMAR's most rugged machines and works effectively in extremely tight spaces other bulkier excavators simply can't reach. Add the balance and stability equal to a conventional excavator, and you've got one of the best values around. Plus, YANMAR's unique SmartAssist Remote gives you peace of mind with theft prevention and maintenance management tools as well as other remote monitoring services.

INNOVATIVE FEATURES



True Zero Tail Swing

YANMAR introduced the world's first zero tail swing excavator in 1993. Today, our true zero tail swing technology means no part of the housing extends beyond the tracks. Since the entire machine operates within its tracks, you can work efficiently almost anywhere, with less damage to the machine and the worksite.



YANMAR's Patented Hydraulic Quick Coupler

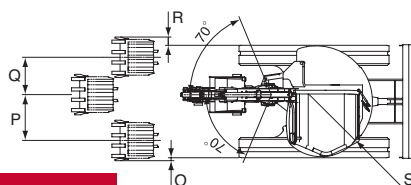
The standard hydraulic quick coupler makes changing buckets fast and easy. With the exception of fitting and removing the safety lock pin, the entire operation is performed electronically while you're seated in the comfort of the cab. Less hassle. Less downtime. More productivity.

A Cab With Everything At Your Fingertips

The new ViO55-6A comes standard with ECO Mode, Auto-Decel Mode, lever-controlled backfill blade and 2-speed operation incorporated right into the operator's station. Plus you get an innovative LCD monitor, showing key operating information and maintenance notification intervals.

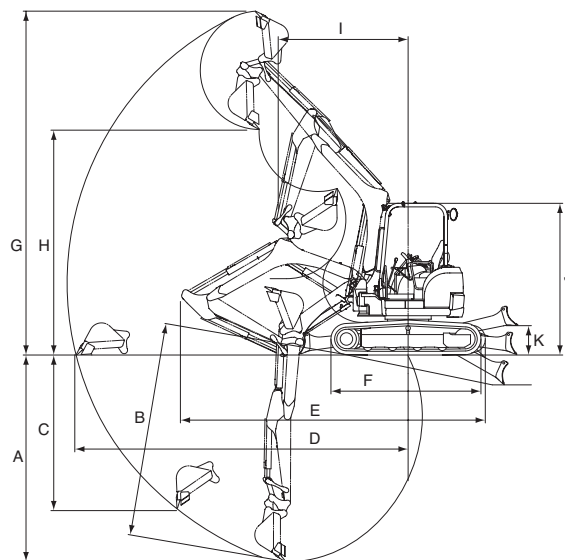
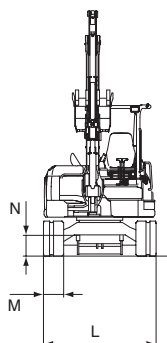


Vi055-6A



Dimensions - Vi055-6A

A 12'9.5" (3,900 mm)	K 1'8" (500 mm)
B 13'6" (4,120 mm)	L 6'6" (1,990 mm)
C 8'5" (2,560 mm)	M 1'4" (400 mm)
D 20'2" (6,140 mm)	N 1'2" (345 mm)
E 18'4" (5,580 mm)	O 1.4" (35 mm)
F 8'6" (2,590 mm)	P 2'3" (680 mm)
G 19'10" (6,060 mm)	Q 2'6" (770 mm)
H 13'3" (4,050 mm)	R 5" (125 mm)
I 7'9" (2,370 mm)	S R3'3" (R995 mm)
J 8'4" (2,540 mm)	



Specifications

Model			Vi055-6A	
Type			Canopy	Cabin
Operating Weight	Rubber Track	lbs (t)	11,850 (5.38)	12,247 (5.55)
	Steel Track	lbs (t)	11,916 (5.41)	12,313 (5.58)
Engine	Type	-	Water-cooled 4-cylinder diesel	
	Model	-	YANMAR 4TNV86CT-PBV	
	Output	HP (kW)/rpm	47.6 (35.5) / 2,400	
Performance	Max Digging Force, Bucket / Arm	lbs (kN)	9,419 (41.9)* / 5,485 (24.4)*	
	Traveling Speed, High / Low	MPH (km / h)	2.6 / 1.4 (4.2 / 2.2)	
	Swing Speed	RPM	10	
	Boom Swing Angle, (L / R)	degrees	68° / 68°	
Ground Contact Pressure	Rubber Track	PSI (kPa)	4.17 (28.8)	4.40 (30.3)
	Steel Track	PSI (kPa)	4.25 (29.3)	4.47 (30.9)
Hydraulic System	Pump Capacity	GPM (L / min)	12 + 12 + 9.7 + 2.8 (42.5 + 42.5 + 37 + 10.8)	
	Main Relief Set Pressure	PSI (MPa)	3,553 x 3 + 566 (24.5 x 3 + 3.9)	
Blade Dimensions	Width x Height	ft-in (mm)	6'6" x 14" (1,970 x 400)	
Fuel tank capacity		Gals (L)	17.4 (66)	

*without quick coupler

Standard Equipment

Blade
 Boom Swing
 Rubber Tracks
 Hydraulic Quick Coupler
 2-way Pattern Control
 Arm End Auxiliary Valve
 Cylinder Rod Guards (boom, arm, bucket, blade)
 ROPS / FOPS Cabin or Canopy
 Windshield Washer (cabin spec)
 Defroster (cabin spec)
 Joystick Pilot Controls
 Arm Rests (adjustable)
 Suspension and Reclining Seat
 Seat Belt
 Traveling Levers and Pedals
 Traveling Alarm
 Built-in Type Boom Light
 Exterior Canopy or Cabin Work Light
 Operation Manual

*Also available without Quick Coupler.

Please note that the standard equipment may vary from this list. Consult your YANMAR dealer for confirmation.

Hydraulic PTO

Model		Vi055-6A		
Specification	Output	PSI (MPa)	GPM (L / min)	
			2,200RPM	1,200RPM
Combined Flow, Double Actions		3553 (24.5)	21.8 (82.8)	12 (45.8)

Lifting Capacity

LIFT POINT HEIGHT in (mm)	(R) LIFT RADIUS in (mm)											
	RATED LIFT CAPACITY OVER END BLADE DOWN				RATED LIFT CAPACITY OVER END BLADE UP				RATED LIFT CAPACITY OVER SIDE BLADE DOWN			
	MAX	157.5 (4,000)	118.1 (3,000)	78.7 (2,000)	MAX	157.5 (4,000)	118.1 (3,000)	78.7 (2,000)	MAX	157.5 (4,000)	118.1 (3,000)	78.7 (2,000)
157.5 (4,000)	2,403 (1,090)				2,290 (1,040)				1,763 (800)			
118.1 (3,000)	2,358 (1,070)	2,314 (1,050)			1,543 (700)	1,829 (830)			1,322 (600)	1,587 (720)		
78.7 (2,000)	2,425 (1,100)	2,645 (1,200)	3,306 (1,500)		1,300 (590)	1,719 (780)	3,152 (1,430)		1,146 (520)	1,587 (720)	2,425 (1,100)	
39.4 (1,000)	2,535 (1,150)	3,042 (1,380)	4,365 (1,980)		1,256 (570)	1,675 (760)	2,535 (1,150)		1,124 (510)	1,499 (680)	2,204 (1,000)	
Ground (0)	2,579 (1,170)	3,284 (1,490)	4,585 (2,080)	6,459 (2,930)	1,300 (590)	1,587 (720)	2,358 (1,070)	4,166 (1,890)	1,102 (500)	1,366 (620)	2,028 (920)	3,351 (1,520)
-39.4 (-1,000)	2,667 (1,210)	2,910 (1,320)	4,232 (1,920)	6,393 (2,900)	1,521 (690)	1,587 (720)	2,403 (1,090)	4,387 (1,990)	1,322 (600)	1,344 (610)	1,984 (900)	3,571 (1,620)
-78.7 (-2,000)	2,535 (1,150)		2,954 (1,340)		2,601 (1,180)		2,469 (1,120)		1,940 (880)		2,116 (960)	

HYDRAULIC EXCAVATOR TB240

Takeuchi
From World First to World Leader



Product Features & Specifications

ENGINE

- U.S. EPA Final Tier 4 Compliant
- DOC+DPF Exhaust After Treatment
- Automatic Fuel Bleed System
- Dual Element Air Filter
- Automatic Idle
- Working Modes: Power, Eco, and High Altitude
- Engine Preheat Starting Aid
- High Capacity Radiator
- High Capacity Fuel Filters

ELECTRICAL

- LCD Informational Display (canopy)
- 5.7" Color Multi-Informational Display (cab)
- Sealed Rocker Switches
- 12 volt System with 40 amp Alternator
- Halogen Work Lights: Boom and Side Cover
- Travel Alarm
- Horn

TAKEUCHI FLEET MANAGEMENT

- 2 Year Standard Service
- Minimize Downtime
- Remote Diagnostics
- Utilization Tracking
- Proactive Maintenance
- Control Costs

UNDERCARRIAGE AND FRAME

- Triple Flanged Track Rollers
- Two-Speed Travel with Automatic Shift
- High Torque Planetary Final Drive
- Heavy Duty Dozer Blade with Float
- Large Wrap Around Counterweight
- 13.8" Rubber Tracks
- 13.8" Steel Tracks (optional)
- Power Angle Blade with Float and Bolt-on Cutting Edge (optional)

OPERATOR'S STATION

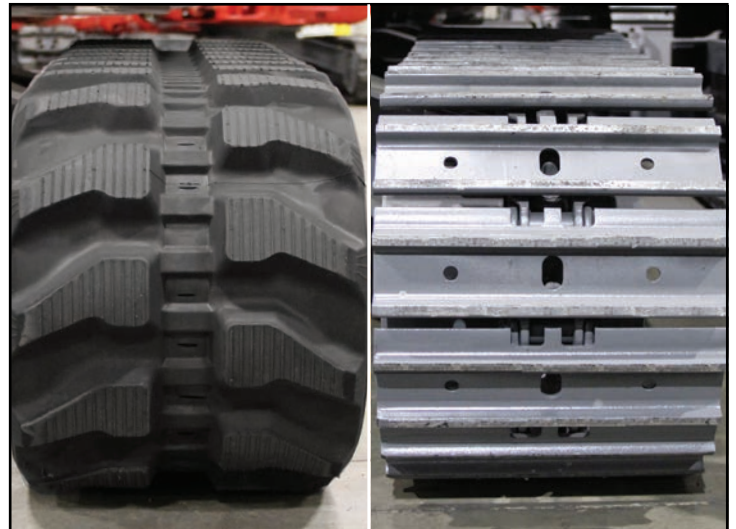
- ROPS / TOPS / OPG (ISO 10262 Level 1) Four Post Canopy
- Deluxe High Back Suspension Seat
- Adjustable Arm Rests
- Proportional Slide Switch for Auxiliary Hydraulics
- 2" Retractable Seat Belt
- 3" Retractable Seat Belt (optional)
- Cab with Air Conditioner, Heat Defrost, Windshield Wiper and Washer, Skylight with Sunshade, AM / FM / MP3 Radio, 12v Power Outlet (optional)

HYDRAULIC & WORKING EQUIPMENT

- Variable Displacement, Open Center Hydraulics
- High Capacity Hydraulic Oil Cooler
- Large Hydraulic Reservoir with Fluid Level Sight Gauge
- Cushioned Boom, Arm, and Swing Cylinders
- Main Boom Cylinder Guard
- Hydraulic Pilot Controls
- Proportional Auxiliary Controls with Detent
- Adjustable Auxiliary Flow
- Primary Auxiliary Hydraulic Circuit Plumbed to Arm
- Multiple Attachment Presets
- Flow Selector Valve, Primary Auxiliary Circuit
- Pattern Change Valve (ISO or SAE)
- Pilot Accumulator
- Long Arm with Integrated Thumb Mount
- Dual Pin Position Bucket (optional)
- Mechanical Bucket Quick Coupler (optional)
- Main Pin Hydraulic Thumb (optional)



Angle Blade with Reversible Bolt On Cutting Edge



Track Options - Rubber or Steel

TOUGH, POWERFUL, RELIABLE



2-Speed Travel w/ Auto Shift



Integrated Anchor Points



Triple Flanged Track Rollers



Multi-Function Switch Bank

Delivering outstanding performance and versatility, the TB240 is one of Takeuchi's most popular conventional tail swing excavators. The TB240 offers steel construction and lockable service access panels, an automotive styled interior, and a smooth and powerful hydraulic system. The TB240 has excellent breakout force, reach and lifting capacity for maximum productivity making it a great choice for the most demanding applications.

Additional features include a DOC + DPF exhaust after treatment system, automatic idle, heavy duty cooling module, and a large wraparound counterweight that protects engine components from damage. The interior offers excellent operator comfort with pilot operated controls, travel controls with large foot pedals, foot operated boom swing, easy to reach rocker switches and a dial throttle control.



Large lockable service hoods provide vandalism protection and outstanding maintenance access.

OPERATING PERFORMANCE

Operating Weight - Canopy	8,570 lb	(3,890 kg)
Cab	8,990 lb	(4,080 kg)
Maximum Bucket Breakout Force	9,959 lb	(4,517 kg)
Maximum Arm Digging Force	4,110 lb	(1,864 kg)
Arm Length	5 ft 3 in	(1,600 mm)
Slew Speed	9.6 rpm	
Traction Force	9,533 lb	(4,324 kg)
Ground Pressure - Canopy	4.4 psi	(30.2 kPa)
Cab	4.6 psi	(31.6 kPa)
Max Travel Speed		
Low Range	1.8 mph	(2.9 km / hr)
High Range	3.3 mph	(5.3 km / hr)

HYDRAULIC SYSTEM

Total Hydraulic Flow	30.6 gpm	(115.8 Lpm)
Auxiliary Hydraulic Flow	17.1 gpm	(64.9 Lpm)
System Operating Pressure	3,481 psi	(24.0 MPa)

ENGINE

Make / Model	Yanmar / 4TNV88C
Displacement	133.6 cu in (2.2 L)
Horsepower @ 2,200 rpm	35.8 hp (26.7 kW)
Maximum Torque @ 1,430 rpm	102.6 ft-lb (139.1 Nm)

FLUID CAPACITIES

Engine Lubrication	7.8 qt (7.4 L)
Cooling System	9.5 qt (9.0 L)
Fuel Tank Capacity	18.5 gal (70.0 L)
Fuel Consumption (65% of Full Load)	1.2 gal / hr (4.8 L / hr)
Hydraulic Reservoir Capacity	10.8 gal (41.0 L)
Hydraulic System Capacity	19.5 gal (74.0 L)



Canopy Display



Cab Display



Long Arm with Thumb Mount



Convenient Serviceability

TB240 Lifting Capacities at Ground Level*

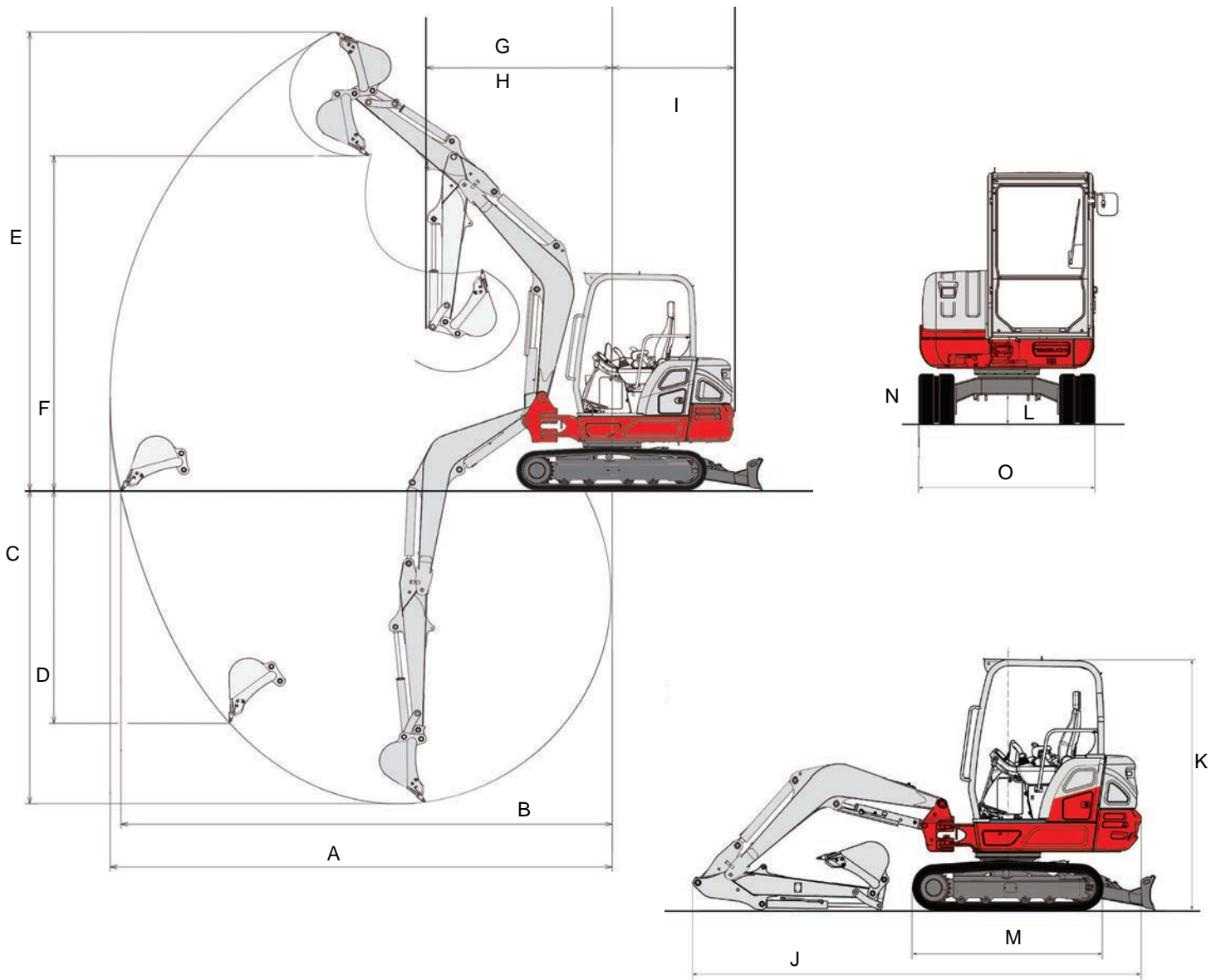
Lift Point Radius from Rotation Axis		9 ft (2,743 mm)		12 ft (3,657 mm)	
	Lifting Capacities Over Front, Blade Down	3,683 lb	(1,670 kg)	2,462 lb	(1,116 kg)
	Lifting Capacities Over Side	2,019 lb	(915 kg)	1,356 lb	(615 kg)

* Ratings based on ISO10567 and do not exceed 87% of hydraulic lift or 75% of tipping load.

ATTACHMENTS

Takeuchi now offers attachments for all of your Takeuchi equipment. See your authorized Takeuchi dealer for additional information and attachment options.

TB240 Compact Excavator



MACHINE DIMENSIONS

A Maximum Reach	18 ft 2.3 in	(5,545 mm)
B Maximum Reach at Ground Level	17 ft 9.6 in	(5,425 mm)
C Maximum Digging Depth	11 ft 4.4 in	(3,465 mm)
D Maximum Vertical Digging Depth	8 ft 8.9 in	(2,665 mm)
E Maximum Dig Height	17 ft 2.5 in	(5,244 mm)
F Maximum Dumping Height	12 ft 6.7 in	(3,828 mm)
G Front Swing Radius	6 ft 8.2 in	(2,037 mm)
H Front Swing Radius with Boom Offset	5 ft 4.0 in	(1,626 mm)
I Tail Swing (Slew) Radius	4 ft 5.7 in	(1,365 mm)
J Transport Length	16 ft 8.2 in	(5,020 mm)
K Transport Height	8 ft 2.6 in	(2,505 mm)
L Ground Clearance	11.6 in	(295 mm)
M Undercarriage Length	6 ft 11.0 in	(2,110 mm)
N Track Width (Rubber)	13.8 in	(350 mm)
O Undercarriage Width	5 ft 8.5 in	(1,740 mm)

HYDRAULIC EXCAVATOR

TB260

Takeuchi
From World First to World Leader



Product Features & Specifications

ENGINE

- U.S. EPA Final Tier 4 Compliant
- Turbocharged
- DOC+DPF Exhaust After Treatment
- Automatic Fuel Bleed System
- Dual Element Air Filter
- Automatic Idle
- Working Modes: Power, Eco, and High Altitude
- Engine Preheat Starting Aid
- High Capacity Radiator and Hydraulic Oil Cooler
- High Capacity Fuel Filters

ELECTRICAL

- Multi-Informational Display (canopy)
- 5.7" Color Multi-Informational Display (cab)
- Sealed Rocker Switches
- 12 volt System with 55 amp Alternator
- Halogen Work Lights: Two Forward Facing and One on the Right and Left Sides
- Travel Alarm
- Horn

TAKEUCHI FLEET MANAGEMENT

- 2 Year Standard Service
- Minimize Downtime
- Remote Diagnostics
- Utilization Tracking
- Proactive Maintenance
- Control Costs

UNDERCARRIAGE AND FRAME

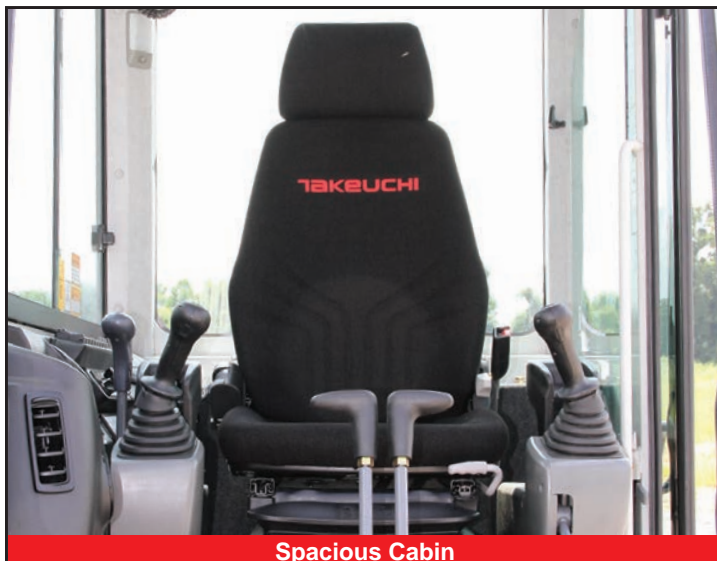
- Triple Flanged Track Rollers
- 2-Speed Travel with Automatic Shift
- High Torque Planetary Final Drive
- Heavy Duty Dozer Blade with Float
- Large Wrap Around Counterweight
- 15.7" Rubber Tracks
- 15.7" Steel Tracks (optional)
- 15.7" Segmented Rubber Tracks (optional)
- Power Angle Blade with Float and Bolt-on Cutting Edge (optional)

OPERATOR'S STATION

- ROPS / OPG Level 1 Four Post Canopy
- Deluxe High Back Suspension Seat
- Adjustable Arm Rests
- 2" Retractable Seat Belt
- 3" Retractable Seat Belt (optional)
- Cab with Air Conditioner, Heat Defrost, Windshield Wiper and Washer, Skylight with Sunshade, AM / FM / MP3 Radio, 12v Power Outlet (optional)

HYDRAULIC & WORKING EQUIPMENT

- Variable Displacement, Open Center Hydraulics
- Cushioned Boom, Arm, and Swing Cylinders
- Hydraulic Pilot Controls
- Proportional Auxiliary Controls with Detent
- Adjustable Auxiliary Flow
- Large Hydraulic Reservoir with Fluid Level Sight Gauge
- Primary and Secondary Auxiliary Hydraulic Circuit Plumbed to Arm
- Multiple Attachment Presets
- Flow Selector Valve, Primary Auxiliary Circuit
- Pattern Change Valve (ISO or SAE)
- Boom Holding Valve with Lift Overload Alarm
- Pilot Accumulator
- Main Boom Cylinder Guard
- Long Arm with Integrated Thumb Mount
- Dual Pin Position Bucket (optional)
- Mechanical Bucket Quick Coupler (optional)
- Main Pin Hydraulic Thumb (optional)



Spacious Cabin



Automotive Styled Interior

TOUGH, POWERFUL, RELIABLE



Large Floor with Foot Rest



Wraparound Counterweight



Triple Flanged Track Rollers



Work Lights

Known for its dependability and outstanding performance in the field, the TB260 offers lockable service access panels, automotive styled interior, and a smooth and powerful hydraulic system. Primary and secondary auxiliary hydraulic circuits and a high capacity hydraulic system make the TB260 an excellent attachment platform, and a pattern change valve located under the side cover allows the operator to choose their preferred operational control pattern before entering the machine. Once

in the cabin the operator will enjoy a deluxe high back suspension seat, a spacious interior that is comfortable and includes conveniently positioned rocker switches to control additional functions, and the dial throttle allows the operator to control engine speed effortlessly. Additional features include a U.S. EPA Final Tier 4 compliant engine with DOC and DPF, automatic idle, heavy duty cooling module, and a large wraparound counterweight that protects engine components from damage.



Large lockable service hoods provide vandalism protection and outstanding maintenance access.

OPERATING PERFORMANCE

Operating Weight - Canopy	12,125 lb	(5,500 kg)
Cab	12,645 lb	(5,735 kg)
Maximum Bucket Breakout Force	12,756 lb	(5,786 kg)
Maximum Arm Digging Force	5,755 lb	(2,610 kg)
Arm Length	5 ft 10.1 in	(1,780 mm)
Slew Speed	9.4 rpm	
Traction Force	14,006 lb	(6,353 kg)
Ground Pressure - Canopy	4.4 psi	(30.2 kPa)
Cab	4.6 psi	(31.5 kPa)
Max Travel Speed		
Low Range	1.7 mph	(2.8 km / hr)
High Range	3.0 mph	(4.9 km / hr)

HYDRAULIC SYSTEM

Total Hydraulic Flow	45.3 gpm	(171.5 Lpm)
Auxiliary Flow - Primary Circuit	27.0 gpm	(102.2 Lpm)
Auxiliary Flow - Secondary Circuit	11.6 gpm	(43.9 Lpm)
Hydraulic System Pressure	3,480 psi	(24.0 MPa)

ENGINE

Make / Model	Yanmar / 4TNV86CT	
Displacement	127.6 cu in	(2.1 L)
Horsepower @ 2,400 rpm	47.6 hp	(35.5 kW)
Maximum Torque @ 1,560 rpm	130.5 ft-lb	(177.0 Nm)

FLUID CAPACITIES

Engine Lubrication	7.8 qt	(7.4 L)
Cooling System	11.6 qt	(11.0 L)
Fuel Tank Capacity	21.3 gal	(81.0 L)
Fuel Consumption (65% of Full Load)	1.6 gal / hr	(6.3 L / hr)
Hydraulic Reservoir Capacity	12.9 gal	(49.0 L)
Hydraulic System Capacity	23.8 gal	(90.0 L)



Canopy Display



Cab Display




Long Arm with Thumb Mount



Multi-Function Switch Bank

TB260 Lifting Capacities at Ground Level*

Lift Point Radius from Rotation Axis		9 ft (2,743 mm)		12 ft (3,657 mm)	
	Lifting Capacities Over Front, Blade Down	6,660 lb	(3,021 kg)	4,296 lb	(1,949 kg)
	Lifting Capacities Over Side	3,142 lb	(1,425 kg)	2,080 lb	(943 kg)

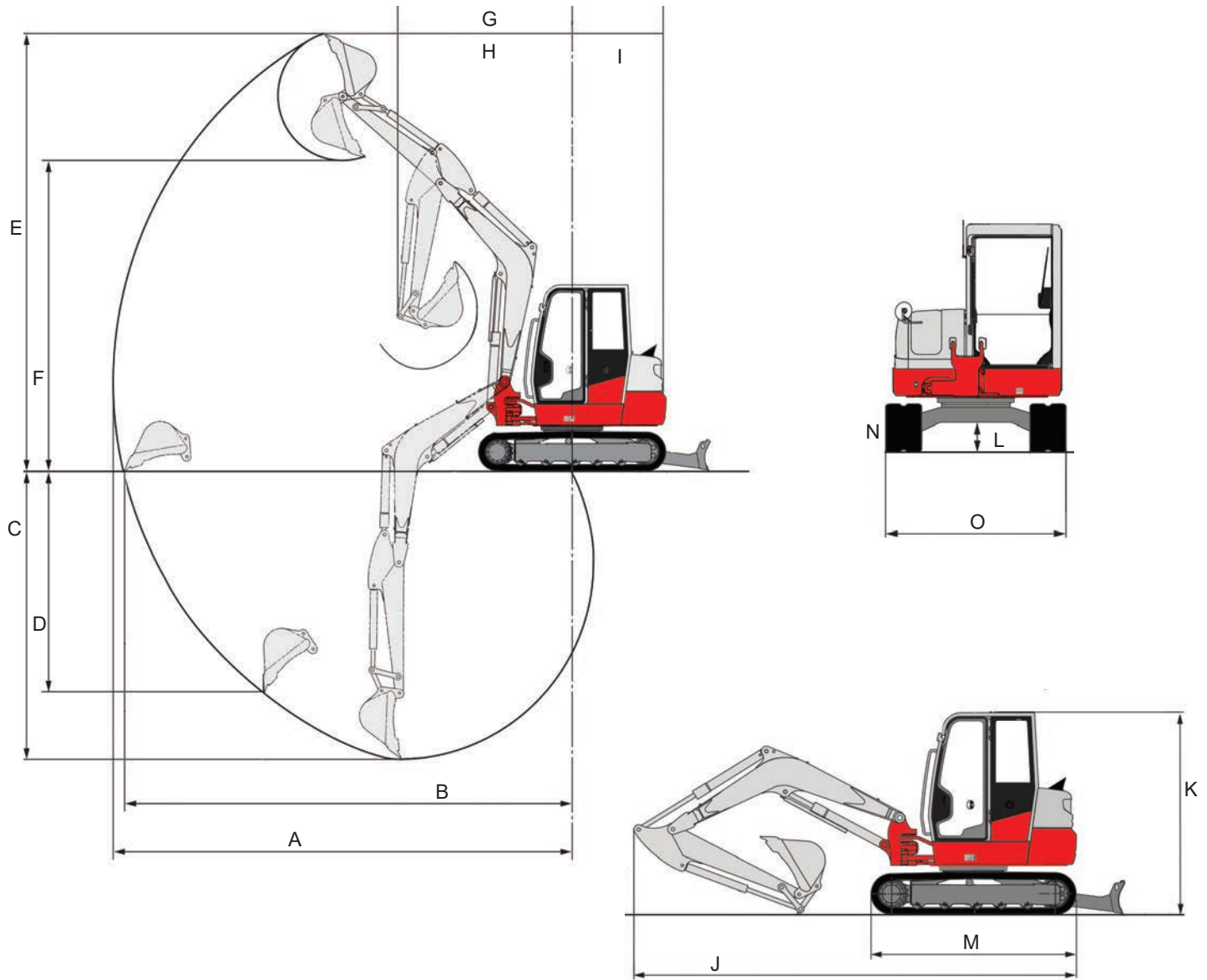
* Ratings based on ISO10567 and do not exceed 87% of hydraulic lift or 75% of tipping load.

ATTACHMENTS

Takeuchi now offers attachments for all of your Takeuchi equipment.

See your authorized Takeuchi dealer for additional information and attachment options.

TB260 Compact Excavator



MACHINE DIMENSIONS

A	Maximum Reach	20 ft 6.9 in	(6,270 mm)
B	Maximum Reach at Ground Level	20 ft 1.4 in	(6,132 mm)
C	Maximum Digging Depth	12 ft 9.4 in	(3,895 mm)
D	Maximum Vertical Digging Depth	9 ft 9.3 in	(2,980 mm)
E	Maximum Dig Height	19 ft 5.9 in	(5,940 mm)
F	Maximum Dumping Height	13 ft 10.1 in	(4,220 mm)
G	Front Swing Radius	7 ft 11.3 in	(2,420 mm)
H	Front Swing Radius with Boom Offset	6 ft 5.8 in	(1,975 mm)
I	Tail Swing (Slew) Radius	4 ft 3.1 in	(1,300 mm)
J	Transport Length	18 ft 2.5 in	(5,550 mm)
K	Transport Height	8 ft 5.4 in	(2,575 mm)
L	Ground Clearance	13.1 in	(330 mm)
M	Undercarriage Length	8 ft 5.3 in	(2,575 mm)
N	Track Width (Rubber)	15.7 in	(400 mm)
O	Undercarriage Width	6 ft 6.7 in	(2,000 mm)

450 SERIES

ARTICULATING BOOM LIFT



Performance

Platform Height	45 ft	13.72 m
Horizontal Outreach		
450AJ	25 ft	7.62 m
Up and Over Height	24 ft	7.3 m
Swing	355 Degrees Non-Continuous	
Platform Capacity		
Unrestricted	550 lb	250 kg
Platform Size	30 x 72 in.	0.76 x 1.83 m
Platform Rotator	180 Degrees Hydraulic	
Jib	4 ft 1 in.	1.24 m
Range of Articulation	145 Degrees (+76, -69)	
Weight		
450AJ	14,150 lb	6,418 kg
Max Ground Bearing Pressure	65 psi	4.57 kg/cm ²
Drive Speed	4.25 mph	6.84 km/hr
Gradeability		
2WD	30%	
4WD	45%	
Tilt Cut Out	5 Degrees	
Axle Oscillation	4 in.	10 cm
Turning Radius		
Inside	6 ft 9 in.	2.06 m
Outside	15 ft 8 in.	4.78 m

Standard Specifications

Power Source

Diesel Engine		
Deutz D2.9 L4 Tier 4 Final	49 hp	36.4 kW
Fuel Tank Capacity	16 gal.	60.6 L

Hydraulic System

System Capacity	38 gal.	143.8 L
Tank Capacity	36 gal.	136.27 L
Auxiliary Power	12V-DC	

Tires

Standard	12 x 16.5 Foam Filled Lug Tread	
Optional	Non Marking Foam Filled Tires	



Standard Features

- 4 ft 1 in. (1.24 m) Articulating Jib
- Platform 30 x 72 in. (0.76 x 1.83 m) Side Entry
- 180 Degree Hydraulic Platform Rotator
- Platform Console Machine Status Light Panel¹
- 110V-AC Receptacle in the Platform
- 5 Degree Tilt Alarm/Indicator Light
- Swing Out Engine Module
- Improved Multi-Function Controls
- Gull-Wing Turntable Hoods
- 12V-DC Auxiliary Power
- Hourmeter
- Interactive Display at Ground Controls
- Proportional Controls
- Control ADE[®] System
- Lifting/Tie Down Lugs
- Horn
- Four-Wheel Hydrostatic Drive
- Oscillating Axle
- Cast Aluminum Control Box
- Motion Alarm
- Reduced Time to Full Height
- Load Sensing System
- SkyGuard SkyLine™

Accessories & Options

- Inward Self-Closing Swing
 - Flashing Amber Beacon
 - Accessory Packages
 - SkyPower[®] Package
1. Provides indicator lights at platform control console for system distress, low fuel, 5 degree tilt light, and foot switch status.
 2. Includes battery blanket, hydraulic tank heater, block heater (GM), glow plugs (Deutz).
 3. Includes boom wipers, cylinder bellows and console cover.
 4. Includes arctic hydraulic hoses (drive and steer only) and main boom cable, extreme cold engine oil, fuel conditioner, engine block heater, battery blanket, glow plugs, hydraulic tank heater, and oversized footswitch.
 5. Includes platform work lights, head and tail lights, amber beacon.

Note: Some options may increase lead time, and some option combinations may not be available.

Additional accessories and options available via JLG Aftermarket.

450 SERIES

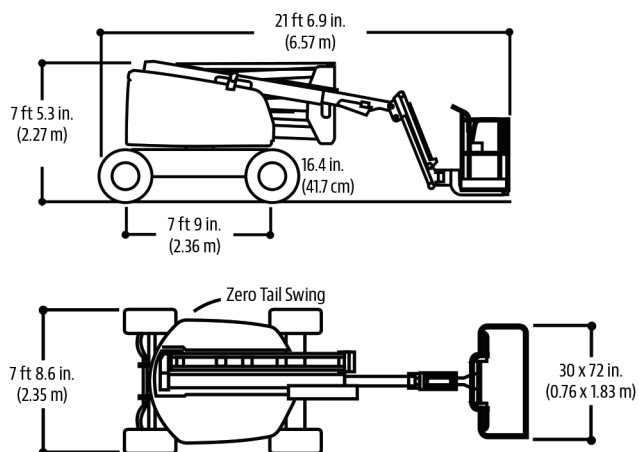
ARTICULATING BOOM LIFT



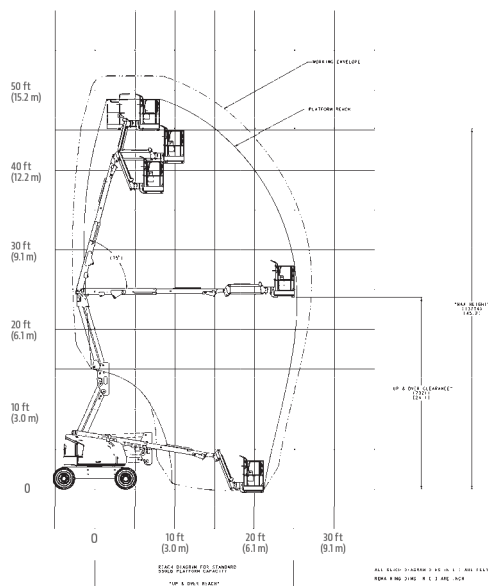
Dimensions

All dimensions are approximate.

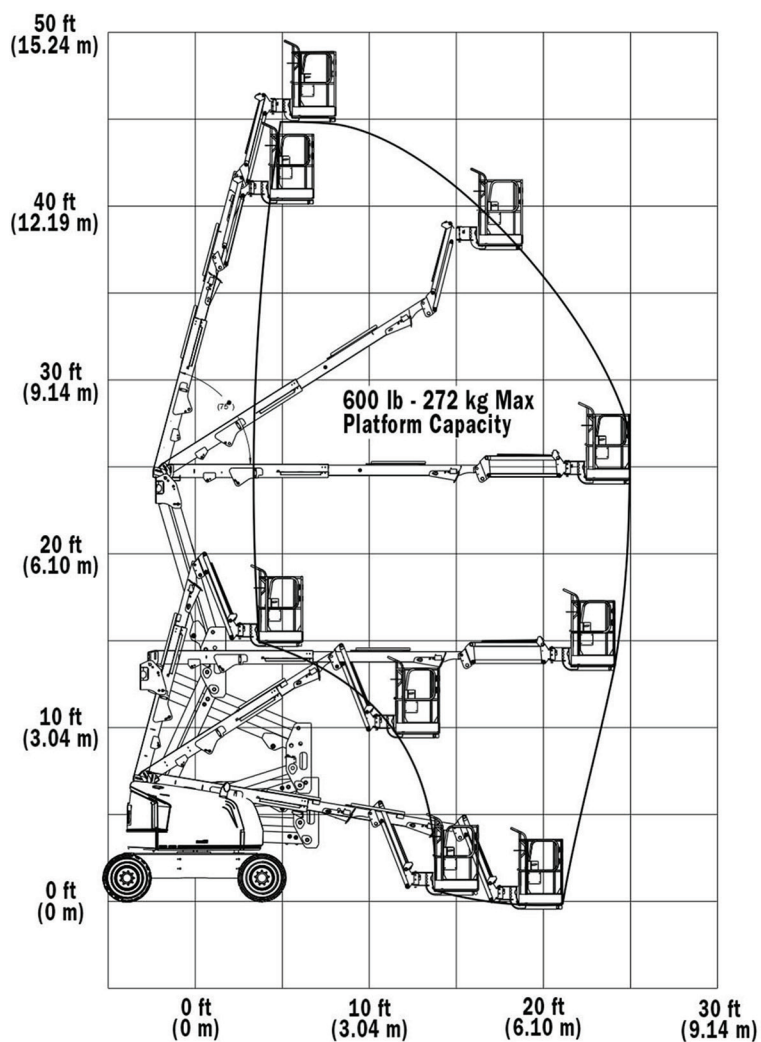
450AJ



450AJ



Support



SkyPower®

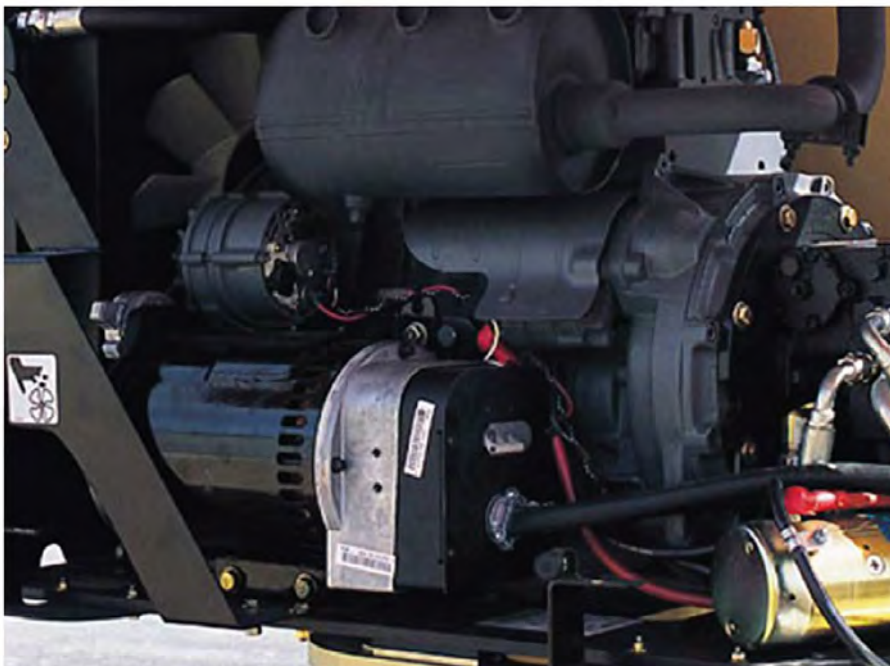
The JLG SkyPower® system delivers the power you need to conveniently operate other JLG accessories. With the SkyPower system on your machine, you get a 7500W generator with a power cable to the platform. Easily add and provide power to other JLG accessories, including SkyWelder® and SkyCutter® packages.

Features

- Self-contained AC power to run hand tools
- Side-entry platform provides improved entry and allows for later quick installation of the SkyGlazier® panel tray.
- Integrated power cable allows you to quickly attach or detach a variety of JLG accessories

Save Time and Money

- Eliminate the need to move and reposition the generator, resulting in significant time savings
- Save fuel by using SkyPower in place of a separate ground-based generator
- Eliminate the tracking and delivery costs associated with a separate generator
- Reduce costs associated with power cable damage



1055

TELEHANDLER

JLG
reachingout®



Performance

Rated Capacity	10,000 lb	4,536 kg
Maximum Lift Height	55 ft	16.76 m
Load at Max Height	5,000 lb	2,268 kg
Maximum Forward Reach	42 ft	12.8 m
Load at Max Reach	3,000 lb	1,361 kg
Frame Leveling	10°	
Lift Speed (boom retracted)		
Up	14 sec	
Down	11 sec	
Boom Speed		
Extended	16 sec	
Retracted	15 sec	
Top Travel Speed (4-Speed)	20 mph	32 kph
Drawbar Pull (loaded)	25,400 lb	113 kN
Outside Turning Radius	14 ft	4.3 m
Operating Weight	31,559 lb	14,315 kg

Standard Specifications

Engine

Make and Model	Cummins QSF3.8L Tier 4 F	
No. of Cylinders	4	
Displacement	231.9 cu in.	3.8 L
Gross Power Basic	130 hp	96 kW
Maximum Torque @ 1500 rpm	360 lb-ft	488 Nm
Fuel Tank Capacity	38.3 gal	145 L

Transmission

Powershift 4-speed forward and 3-speed reverse.

Axles

Trunnion mounted planetary 55° steer axles. Integral steer cylinder.
High bias limited slip differential on front axle.

Brakes

Service brakes are inboard wet disc brake on front and rear axles.
Parking brakes are wet disc spring-applied hydraulic release on front axle.

Tires

Standard	14.00 x 24-12PR Foam-Filled
----------	-----------------------------

Cab

- Certified ROPS/FOPS structure
- Horn
- Tilt & declutch on joystick
- Adjustable seat
- Single joystick controls
- Anti-theft

Steering 4-Wheel

Hydraulic power steering with manual backup.
Operator selectable 4-wheel circle, 4-wheel crab, 2-wheel front.

Instruments

- Volt meter
- Engine oil pressure gauge
- Fuel gauge
- Hourmeter
- Temperature gauge
- DEF gauge

Hydraulic System-Implement

Capacity	48.6 gal	184 L
----------	----------	-------

Load sense piston pump. Auxiliary hydraulics used for all attachments equipped with cylinders or other hydraulic components.

Accessories & Options

- Enclosed Cab
- Road Lights
- Work Lights
- Multi-Function Display with Reversing Camera

Attachments

Side-Tilt Carriage	50 in.	1.3 m
Pallet Forks	2.36 in. x 4 in. x 48 in. 2.00 in. x 6 in. x 72 in.	60 mm x 102 mm x 1.2 m 51 mm x 152 mm x 1.8 m
Lifting Hook-Coupler Mounted	x	

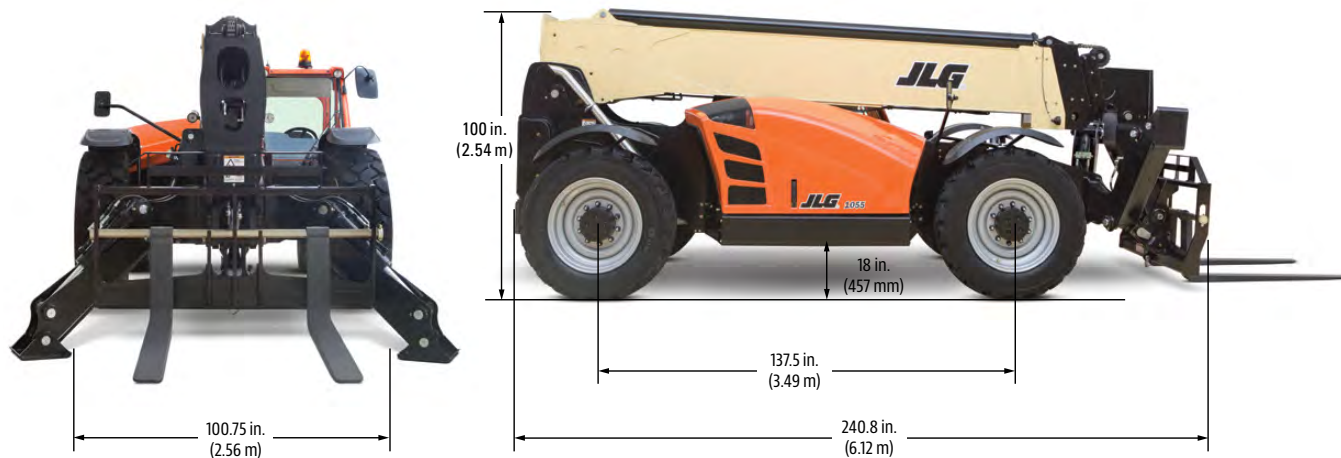
1055

TELEHANDLER

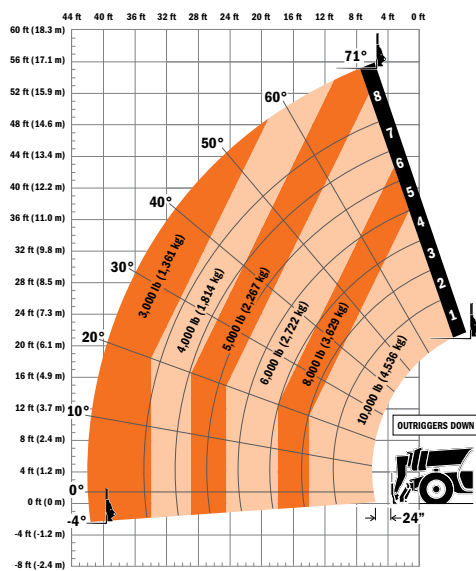
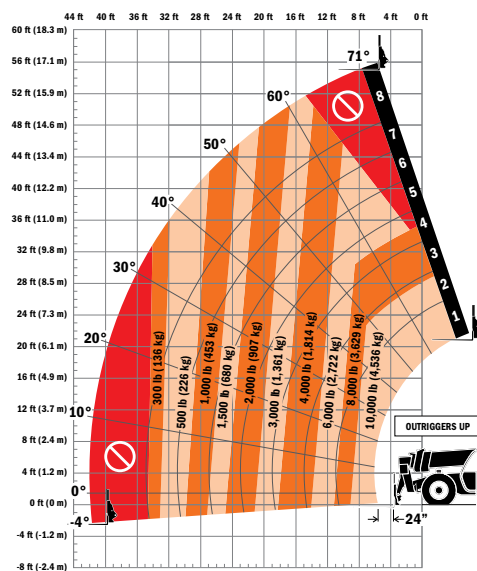


Dimensions

All dimensions are approximate.



Load Chart



1255

TELEHANDLER

JLG
reachingout®



Performance

Rated Capacity	12,000 lb	5,443 kg
Maximum Lift Height	55 ft	16.76 m
Load at Max Height	5,000 lb	2,268 kg
Maximum Forward Reach	42 ft	12.8 m
Load at Max Reach	3,500 lb	1,588 kg
Frame Leveling	10°	
Lift Speed (boom retracted)		
Up	16 sec	
Down	13 sec	
Boom Speed		
Extended	18 sec	
Retracted	15 sec	
Top Travel Speed (4-Speed)	20 mph	32 kph
Drawbar Pull (loaded)	25,400 lb	113 kN
Outside Turning Radius	14 ft	4.3 m
Operating Weight	33,960 lb	15,404 kg

Standard Specifications

Engine

Make and Model	Cummins QSF3.8L Tier 4 F	
No. of Cylinders	4	
Displacement	231.9 cu in.	3.8 L
Gross Power Basic	130 hp	97 kW
Maximum Torque @ 1500 rpm	360 lb-ft	488 Nm
Fuel Tank Capacity	38.3 gal	145 L

Transmission

Powershift 4-speed forward and 3-speed reverse.

Axles

Trunnion mounted planetary 45° steer axles. Integral steer cylinder.
High bias limited slip differential on front axle.

Brakes

Service brakes are inboard wet disc brake on front and rear axles.
Parking brakes are wet disc spring-applied hydraulic release on front axle.

Tires

Standard	400/75-28
Optional	Foam-Filled or Solid

Cab

- Certified ROPS/FOPS structure
- Horn
- Tilt & Declutch on Joystick
- Adjustable Seat
- Single Joystick Controls
- Anti-Theft

Steering 4-Wheel

Hydraulic power steering with manual backup.
Operator selectable 4-wheel circle, 4-wheel crab, 2-wheel front.

Instruments

- Volt Meter
- Engine Oil Pressure Gauge
- Fuel Gauge
- Hourmeter
- Temperature Gauge
- DEF Gauge

Hydraulic System-Implement

Capacity	49.9 gal	189 L
----------	----------	-------

Load sense piston pump. Auxiliary hydraulics used for all attachments equipped with cylinders or other hydraulic components.

Accessories & Options

- Enclosed Cab
- Auxiliary Electrics
- Road Lights
- Air Conditioning
- Work Lights
- Rotating Beacon
- Hydraulic Coupler
- Fenders
- Brick Guards
- Arctic Package
- Multi-Function Display with Reversing Camera
- Ride Control
- Reverse Sensing System
- Boom Brushes
- Secondary Steering
- Wiper Package
- Positive Air Shut Off
- Non-Marking Tires

Attachments

Standard Carriage	50 in. 60 in. 72 in.	1.3 m 1.5 m 1.8 m
Side-Tilt Carriage	50 in. 60 in. 72 in.	1.3 m 1.5 m 1.8 m
Swing 90° or 180° Carriage	72 in.	1.8 m
Dual Fork Positioning Carriage	50 in.	1.3 m
Side-Shift Carriage	50 in.	1.3 m
Tower	8 ft	2.4 m
Tower with Side Tilt	8 ft	2.4 m
Pallet Forks	2.36 in. x 5 in. x 48 in. 2.00 in. x 6 in. x 72 in.	60 mm x 127 mm x 1.2 m 51 mm x 152 mm x 1.8 m
Lumber Forks	2.00 in. x 7 in. x 60 in. 2.36 in. x 6 in. x 60 in.	51 mm x 178 mm x 1.5 m 60 mm x 152 mm x 1.5 m
Cubing Forks	2 in. x 2 in. x 48 in.	51 mm x 51 mm x 1.2 m
Fork Extensions	90 in.	2.3 m
Material Bucket	72 in., 1.0 cu yd 96 in., 1.5 cu yd 102 in., 2.0 cu yd	1.8 m, 0.76 m³ 2.4 m, 1.15 m³ 2.6 m, 1.53 m³
Grapple Bucket	96 in., 1.75 cu yd	2.4 m, 1.34 m³
Truss Boom	3 ft (winch), 4,000 lb Capacity	0.9 m, 1,814 kg Capacity
Truss Boom	12 ft, 2,000 lb 15 ft, 2,000 lb 12 ft with winch, 2,000 lb	3.7 m, 907 kg 4.6 m, 907 kg 3.7 m, 907 kg
Fork-Mounted Work Platform	8 ft, 6,000 lb Capacity	1.8 m, 2,722 kg Capacity
Pipe Grapple	72 in., 6,000 lb Capacity	2.4 m, 2,722 kg Capacity
Bucket-Fork Mounted	60 in., 1.3 cu yd	1.5 m, 1.0 m³
Material Handling Arm	4,000 lb Capacity	1,814 kg Capacity
Trash Hopper	72 in., 1.9 cu yd	1.8 m, 1.5 m³
Lifting Hook-Fork Mounted		
Lifting Hook-Coupler Mounted		
Fork-Mounted Extendable Truss		

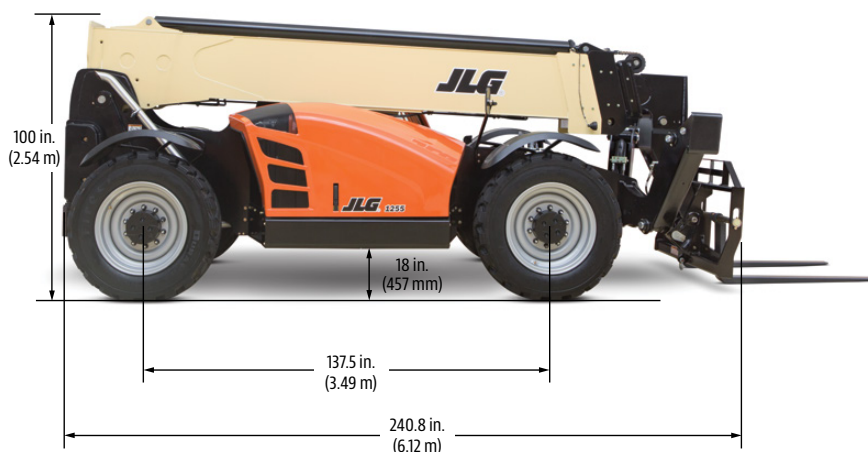
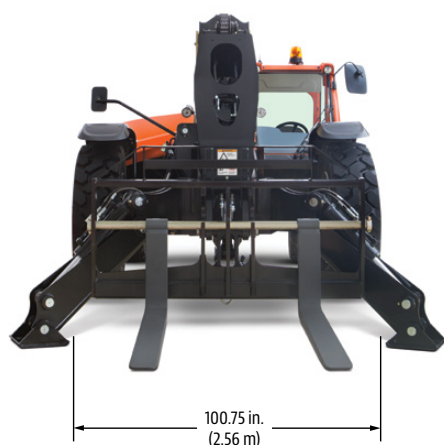
1255

TELEHANDLER

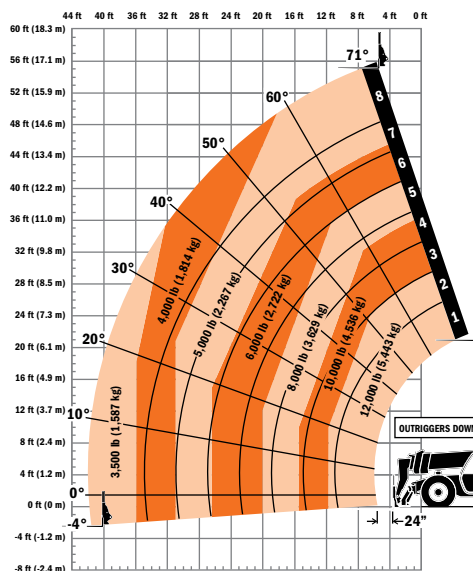
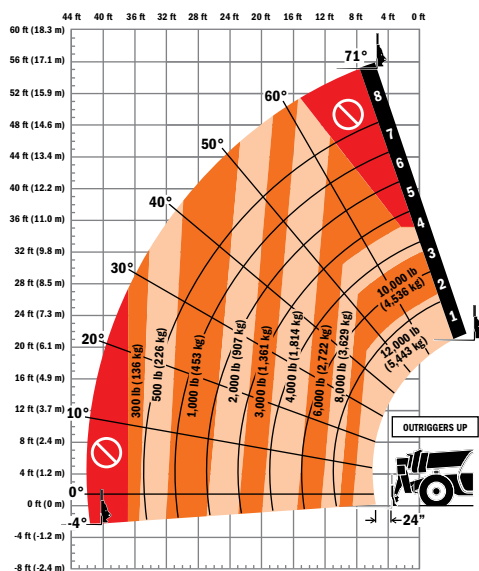


Dimensions

All dimensions are approximate.



Load Chart



The JLG "1, 2 & 5" Warranty

We provide coverage for one (1) full year on the entire machine, two (2) full years or 2,000 hours on the drivetrain and cover all specified major structural components for five (5) years. Due to continuous product improvements, we reserve the right to make specification and/or equipment changes without prior notification.

Part No.: 3132244
RT11802
Printed in USA



JLG Industries, Inc.
1 JLG Drive
McConnellsburg, PA 17233-9533
Telephone 717-485-5161
Toll-free in US 877-JLG-LIFT
Fax 717-485-6417
www.jlg.com

An Oshkosh Corporation Company

Rotary Brush Mower / Cutter

- Unique automatic Float-n-Tilt™ system
- Equipped with safety shut-off system
- Cuts moving forward or reverse
- Pressure relief system for quick shutdown safety
- No shear pins
- Cut, clear, and mulch unwanted brush, thickets, grass and saplings up to 3" in diameter
- Break new trails, clear ditches, construction, property sites, and other overgrown areas
- Best value: powerful, versatile, great price
- Dual-edge cutting blades can be operated in reverse for longer life with optional bidirectional kit

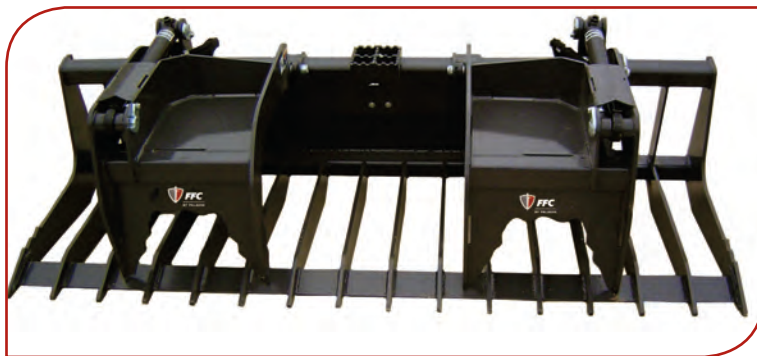
The Rotary Brush Mower / Brush Cutter has been re-engineered for rugged durability, safety, and ease of operation. The 60" and 72" models are built from 1/4" steel making them some of the strongest brush mowers manufactured. This is the most versatile mower on the market today. Use it to cut trees, brush, and unwanted weeds and grass. Its unique automatic Float-n-Tilt™ system allows you to cut evenly on level surfaces, as well as the most rugged terrain.





GRAPPLES

For Skid Steer Loaders, Compact Tool Carriers, Wheel Loaders, and Backhoes Loaders



The **FFC Brush and Scrap Grapples**, by Paladin, have been redesigned to prevent the roll back interference that occurred on some newer models of skid steer loaders and also offers hose length options.

- Patented design withstands the demands of work in scrap handling, recycling, and other tough applications
- Full Feature includes hardened pins, cushioned cylinder kit, and cylinder/hose guard for model 120.

GRAPPLES

BRUSH GRAPPLES

- 6" tine spacing
- Standard cylinder guards protect all cylinder components
- 1 ¼" cylinder pivot pins
- 1 ¼" x 24" patented grapple pins greatly reduce torsional force
- ⅜" end plates on Utility Grapple ½" end plates on Construction Grapple
- Patented cushioned and sleeved cylinders are 2" x 8" x 1 ¼"
- Standard load check valve
- 100,000 PSI yield strength tine material

Specifications	11372-0022
A. Overall Width	73"
B. Grapple Open	40"
C. Grapple Closed	16.5"
D. Overall Depth	39"
Weight	925 lbs
Number of Tines	14

IMPORTANT: All replacement hydraulic hoses and fittings must have a minimum rated working pressure of 4000 psi.

***NOTE:** When ordering new Grapples you must also order the appropriate hose kit. The new Grapples will not automatically ship with hoses.

Carrier Specifications:	Utility	Construction
lift capacities	<4,000 lbs	<5,000 lbs
operating weight	<6,500 lbs	<9,500 lbs

Hose Kit Part Numbers

60"	80"	88"
MTG1113-0022	MTG1113-0903	MTG1113-9783

